

**ARCHER
CEMETERY.**
FRANKLIN CO. SHARON TWP.

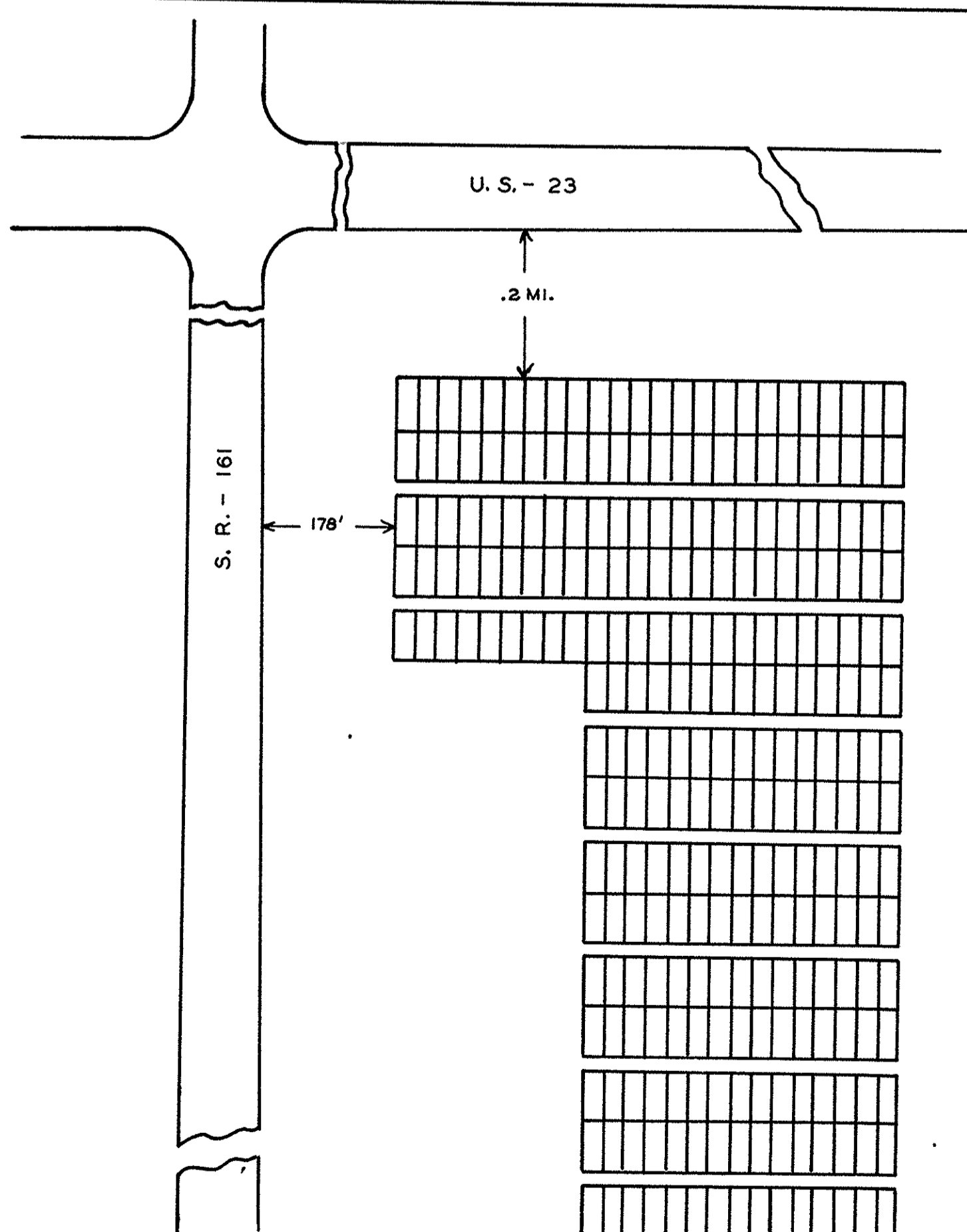
OFFICIAL PROJECT NOS. 465-42-3-467 & 665-42-3-232

LEGEND	HISTORY
① REVOLUTIONARY WAR.	APPROX. EST. DATE. 1830.
⑩ WAR OF 1812.	A PART OF THE U.S.
⑯ WAR WITH MEXICO.	MILITARY LAND PAT.
⑲ CIVIL WAR.	TO JOHN DUNLAP BY
⑳ SPANISH-AM. WAR.	U.S. PRES. JOHN ADAMS
㉑ WORLD WAR.	1800.

SCALE. 1"=20' 0.25 ACRE.

25-17-9

LEGEND
G- GRAVE
W- WAR
R- ROW



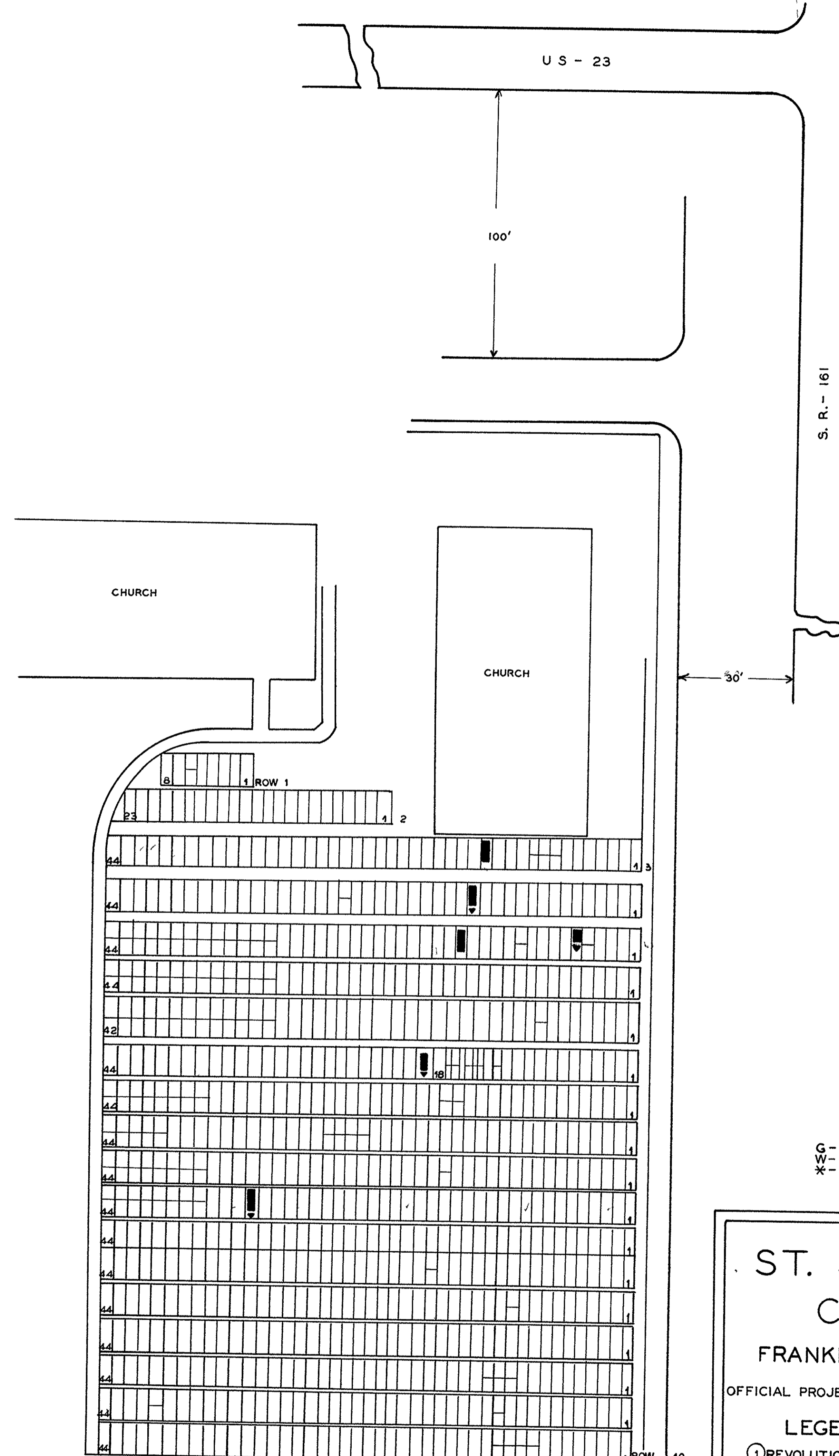
**ST. JOHN'S EPISCOPAL CHURCH
CEMETERY.**
FRANKLIN CO. SHARON TWP.

OFFICIAL PROJECT NOS. 465-42-3-467 & 665-42-3-232

LEGEND	HISTORY
① REVOLUTIONARY WAR.	APPROX. EST. DATE. 1804.
⑩ WAR OF 1812	A PART OF THE U.S.
⑯ WAR WITH MEXICO.	MILITARY LAND PAT.
⑲ CIVIL WAR.	TO JOHN DUNLAP BY
⑳ SPANISH-AM. WAR.	U.S. PRES. JOHN ADAMS
㉑ WORLD WAR.	1800.

SCALE 1"=20' .25 ACRE

25-17-10



NAME	*	G	R	W
ANDREWS NOAH	*	16	5	10
BARKER ELIPHALET	*	14	3	19
BURR HENRY CLAY				
KILBOURNE HECTOR		19	8	10
ORTON LEMUEL		33	12	1
PINNEY ABNER		15	4	1
TULLER BELAM		6	5	10

**ST. JOHN'S EPISC.
CEMETERY.**
FRANKLIN CO. SHARON TWP.

OFFICIAL PROJECT NOS. 465-42-3-467 & 665-42-3-232

LEGEND	HISTORY
① REVOLUTIONARY WAR.	APPROX. EST. DATE 1832.
⑩ WAR OF 1812	A PART OF THE U.S.
⑯ WAR WITH MEXICO.	MILITARY LAND PAT.
⑲ CIVIL WAR.	TO JOHN DUNLAP BY
⑳ SPANISH-AM. WAR.	U.S. PRES. JOHN ADAMS
㉑ WORLD WAR.	1800.

SCALE. 1"=20' .50 ACRE

25-17-8

LEGEND
G- GRAVE
W- WAR
X- POSITION UNKNOWN
R- ROW