

LEGEND
 SEC-SECTION L-LOT R-ROW
 C-GRAVE W-WAR
 * POSITION UNKNOWN

FRANKLINTON CEMETERY

FRANKLIN CO. FRANKLIN TWP

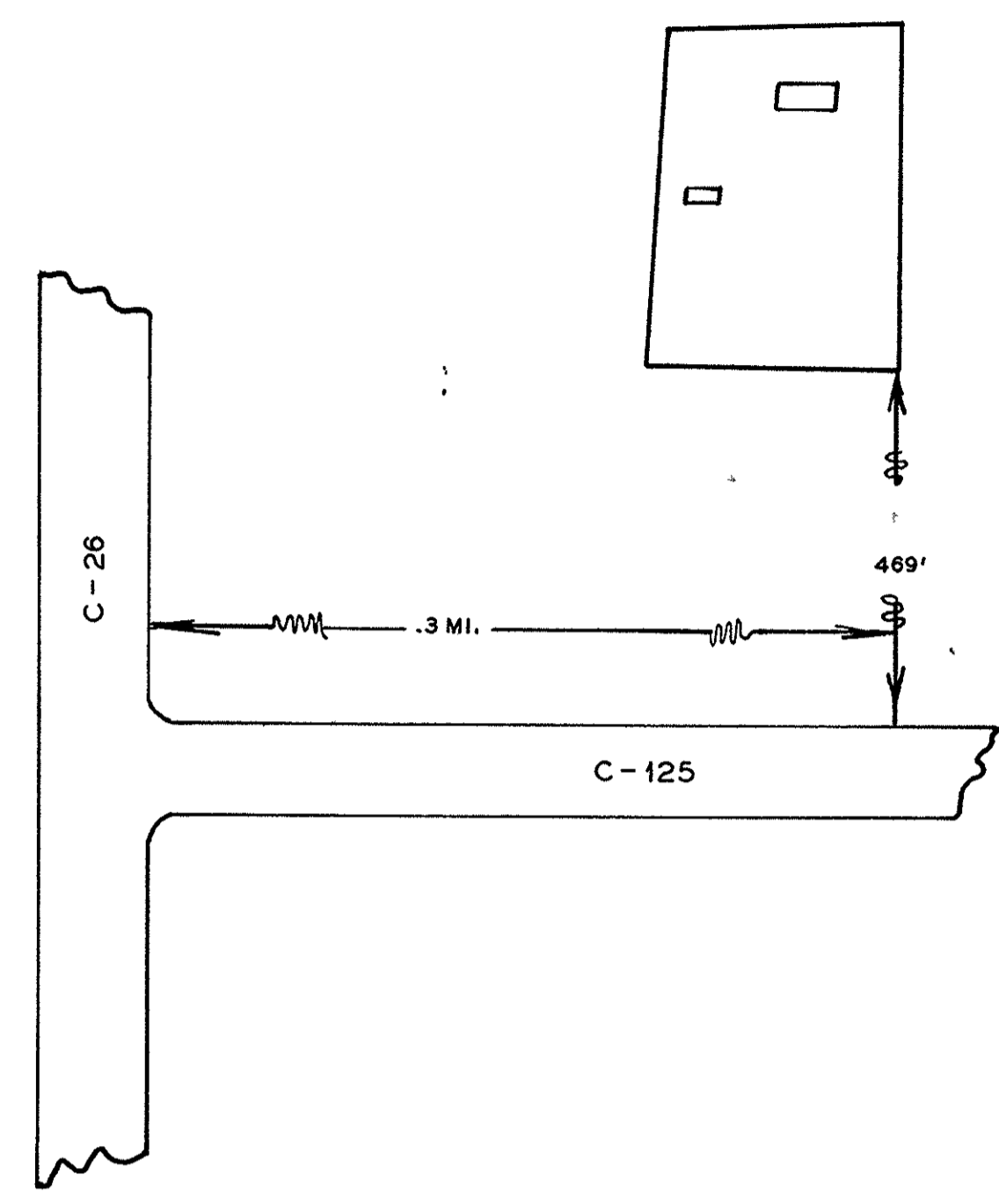
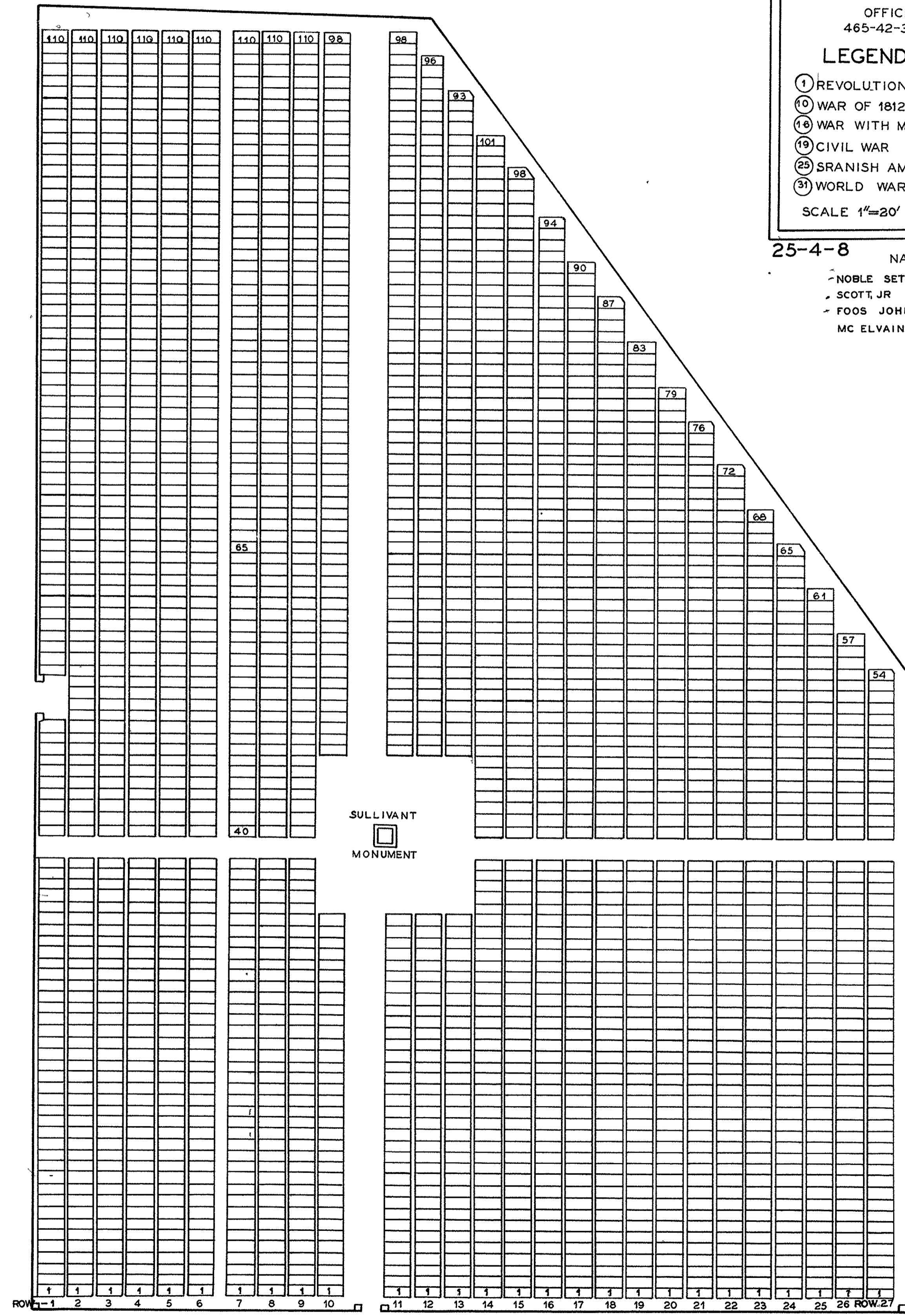
OFFICIAL PROJECT NOS.
 465-42-3-467 & 665-42-3-232

LEGEND HISTORY.

- ① REVOLUTIONARY WAR. APROX. EST. DATE 1800.
- ⑩ WAR OF 1812 A PART OF THE VIRGINIA
- ⑮ WAR WITH MEXICO MILITARY LAND PAT. TO
- ⑲ CIVIL WAR LUCAS SULLIVANT BY
- ⑳ SPANISH AM WAR U S PRESIDENT JOHN
- ⑳ WORLD WAR ADAMS. 1800.

SCALE 1"=20' 1.58 ACRE

25-4-8	NAME	SEC	L	R	G	W
	NOBLE SETH					1 *
	SCOTT, JR SAMUEL					19 *
	FOOS JOHN					1 *
	MC ELVAIN SAMUEL					1 *



ELIE PETERS CEMETERY

FRANKLIN CO. FRANKLIN TWP

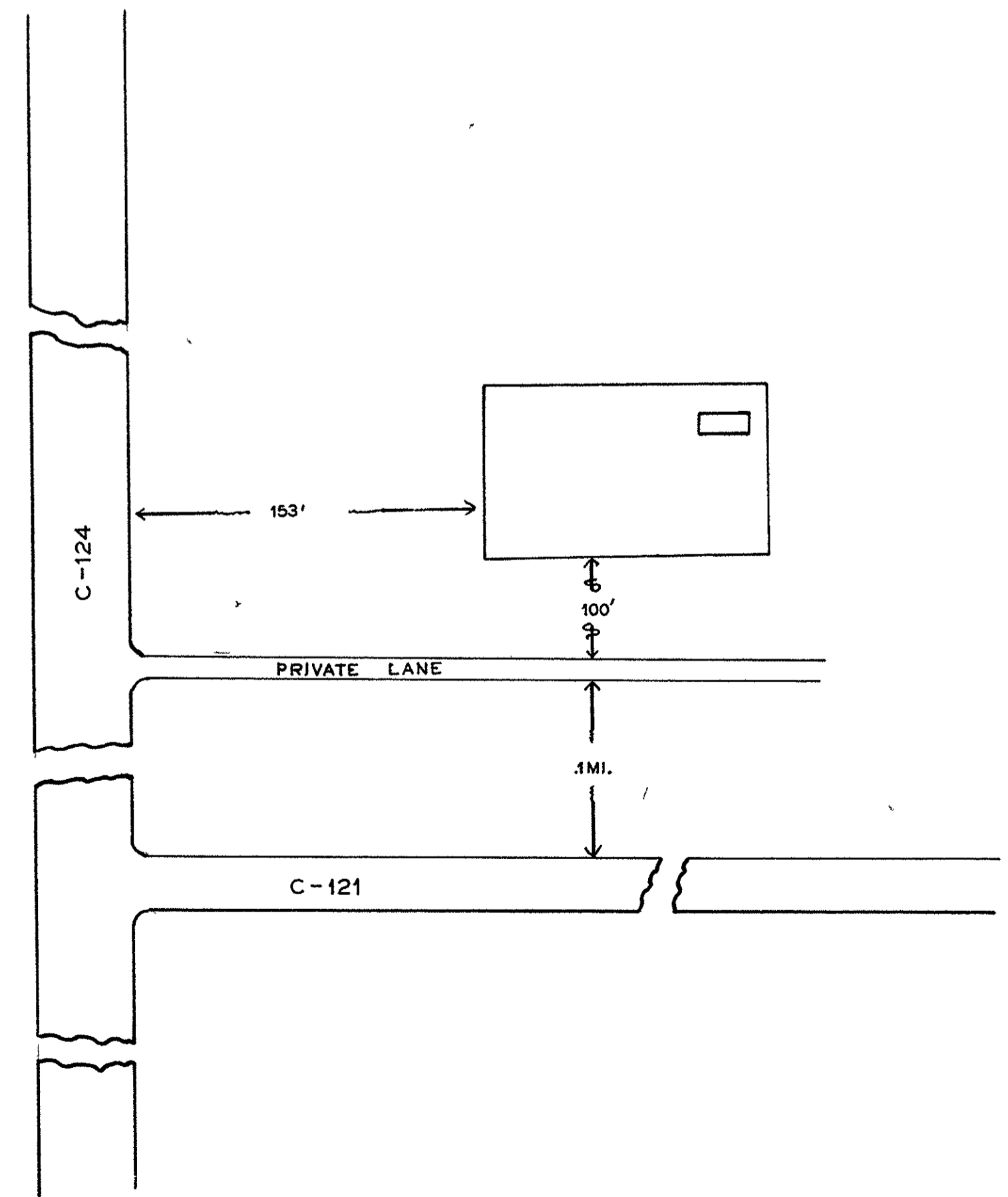
OFFICIAL PROJECT NOS.
 465-42-3-467 & 665-42-3-232

LEGEND HISTORY.

- ① REVOLUTIONARY WAR APROX. EST. DATE 1862. A
- ⑩ WAR OF 1812 PART OF THE VIRGINIA
- ⑮ WAR WITH MEXICO. MILITARY LAND PAT. TO
- ⑲ CIVIL WAR HOLMAN MENNIS BY US
- ⑳ SPANISH AM WAR PRES. T. JEFFERSON. CON-
- ⑳ WORLD WAR VD. TO SAM. HIGGINSON IN

SCALE 1"=20' 1816. .028 ACRE.

25-4-11



RAY WATKINS FARM CEMETERY

FRANKLIN CO. HAMILTON TWP

OFFICIAL PROJECT NOS.
 465-42-3-467 & 665-42-3-232

LEGEND HISTORY.

- ① REVOLUTIONARY WAR. APROX. EST. DATE 1830
- ⑩ WAR OF 1812. A PART OF THE CONGR-
- ⑮ WAR WITH MEXICO. -ESS LAND PATENTED
- ⑲ CIVIL WAR. TO ROBERT CULBER-
- ⑳ SPANISH AM WAR -TSON. 1806. CONVEYED
- ⑳ WORLD WAR. TO WM RILEY. 1826.

SCALE 1"=20' .031 ACRE

25-5-1