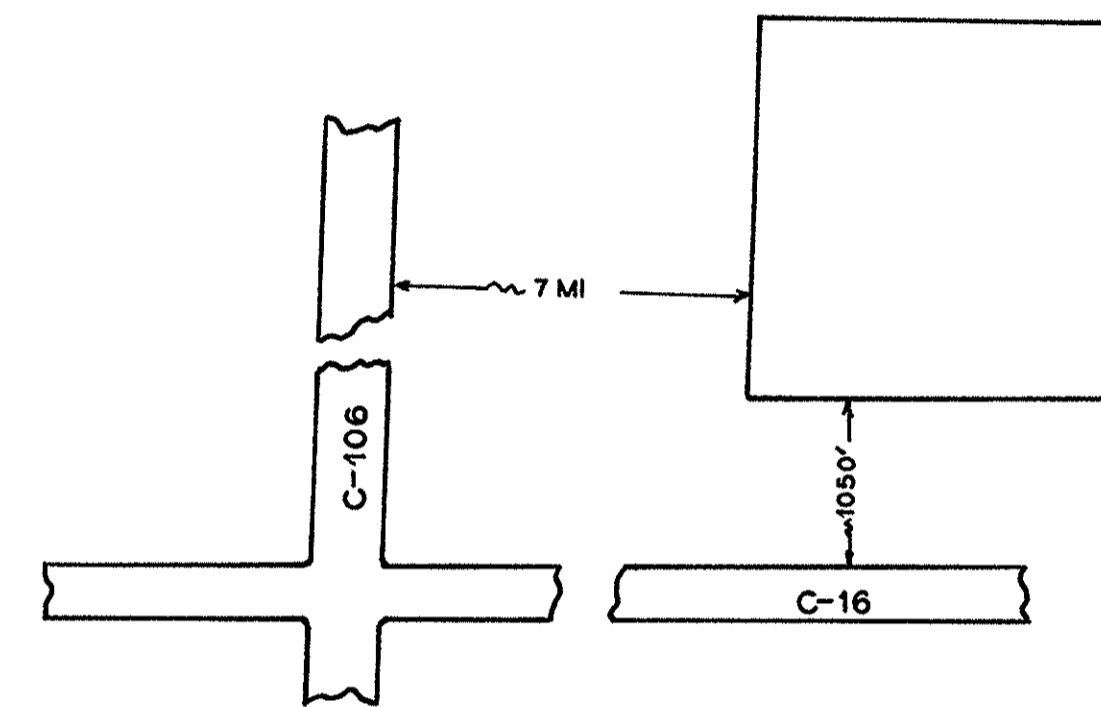


**NEISWINDER
CEMETERY**
FRANKLIN CO. JEFFERSON TWP.
OFFICIAL PROJECT NO'S. 465-42-3-467 & 665-42-3-232

LEGEND	HISTORY
① REVOLUTIONARY WAR.	
⑩ WAR OF 1812.	
⑮ WAR WITH MEXICO.	
⑲ CIVIL WAR.	
⑳ SPANISH AM. WAR.	
㉑ WORLD WAR.	

0.02 ACRE.

25-7-12

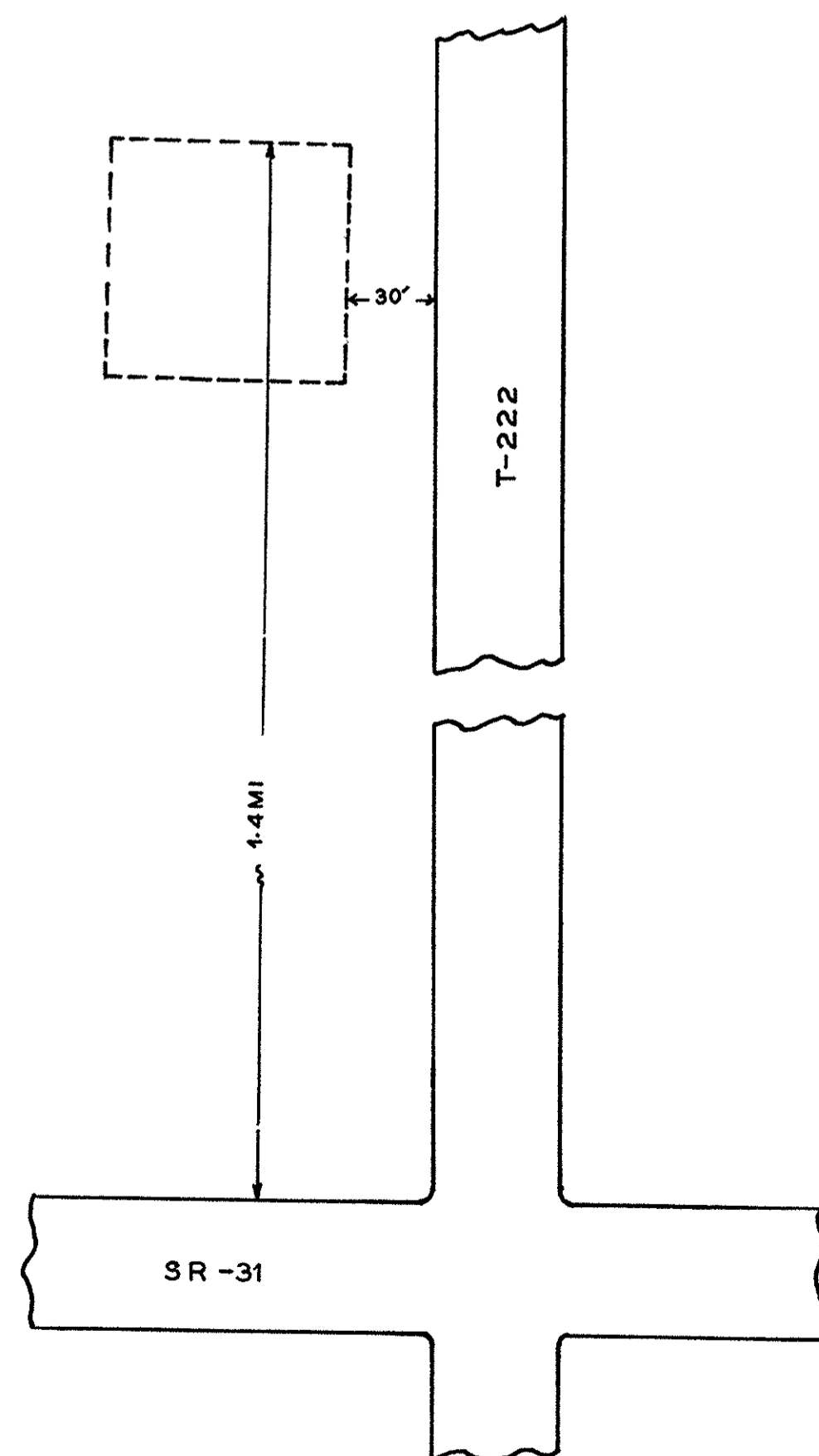


**KLINE
CEMETERY**
FRANKLIN CO. JEFFERSON TWP.
OFFICIAL PROJECT NO'S. 465-42-3-467 & 665-42-3-232

LEGEND	HISTORY
① REVOLUTIONARY WAR.	APPROX. EST. DATE 1860.
⑩ WAR OF 1812.	A PART OF THE U.S. MIL-
⑮ WAR WITH MEXICO.	ITARY LAND. IT BECAME
⑲ CIVIL WAR.	THE PROPERTY OF G.
⑳ SPANISH AM. WAR.	KLINE IN 1835.
㉑ WORLD WAR	

0.04 ACRE

25-7-9

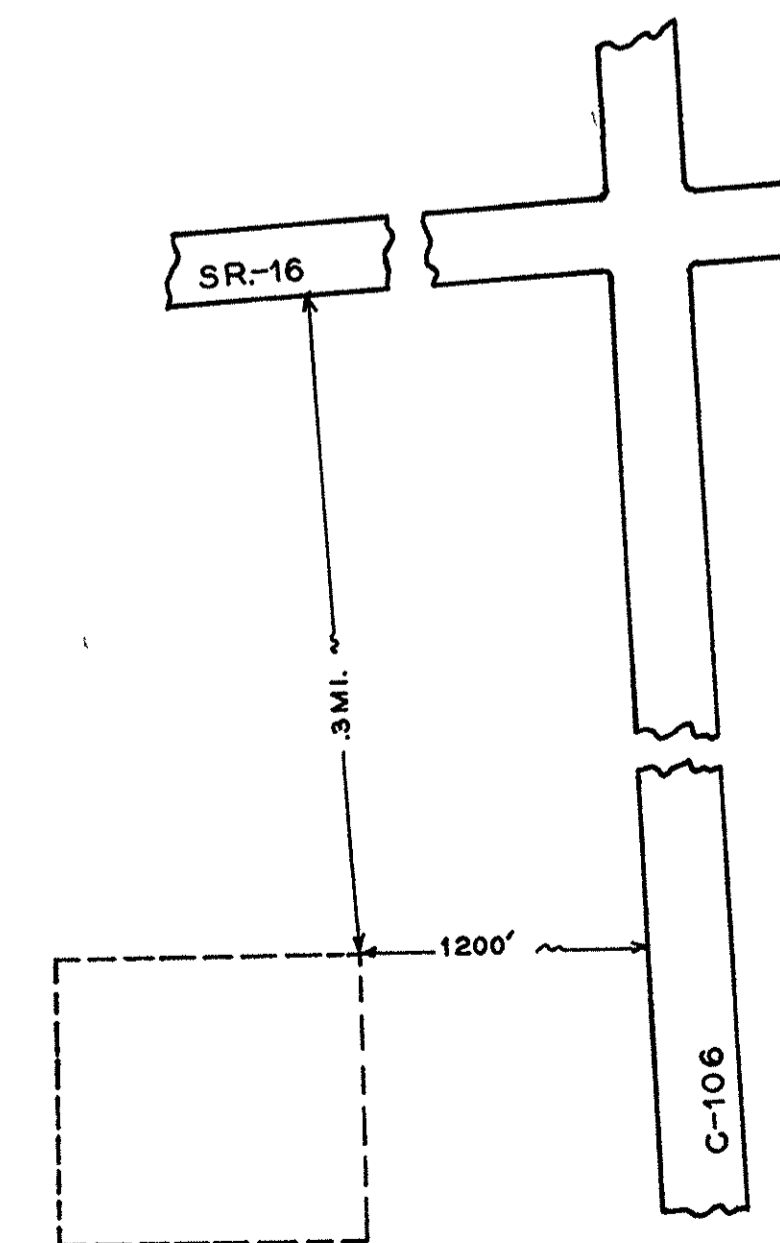


**SHRIDE
CEMETERY**
FRANKLIN CO. MADISON TWP.
OFFICIAL PROJECT NO'S. 465-42-3-467 & 665-42-3-232

LEGEND	HISTORY
① REVOLUTIONARY WAR.	ESTABLISHED APR. 30-
⑩ WAR OF 1812.	1855. BEING PART OF TH
⑮ WAR WITH MEXICO.	ORIGINAL CONGR'S. LAN-
⑲ CIVIL WAR.	D PATENTED TO WILL-
⑳ SPANISH AM. WAR.	IAM STEVENSON MAY-
㉑ WORLD WAR.	23-1810.

0.02 ACRE.

25-8-5



**HOFFINE FARM
CEMETERY**
FRANKLIN CO. JEFFERSON TWP.
OFFICIAL PROJECT NO'S. 465-42-3-467 & 665-42-3-232

LEGEND
SEC=SECTION L=LOT R=ROW
G=GRAVE W=WAR
*POSITION UNKNOWN

LEGEND	HISTORY
① REVOLUTIONARY WAR.	APPROX. EST. DATE 1855.
⑩ WAR OF 1812.	A PART OF THE U.S. MIL.
⑮ WAR WITH MEXICO.	LAND PAT. TO DAVID TO-
⑲ CIVIL WAR.	WNSSEND BY U. S. PRES.
⑳ SPANISH AM. WAR.	THOMAS JEFFERSON
㉑ WORLD WAR.	IN 1808.

0.02 ACRE.

25-7-11