

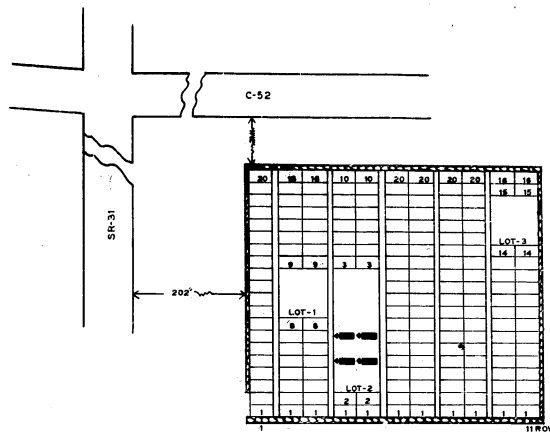
LITCHFORD CEMETERY
 FRANKLIN CO. PERRY TWP.
 OFFICIAL PROJECT NOS.
 465-42-3-467 & 665-42-3-232

LEGEND HISTORY

① REVOLUTIONARY WAR. ESTABLISHED 1835. A
 ② WAR OF 1812. LAND GRANT FROM
 ③ WAR WITH MEXICO. U.S. TO E. BACUS WAR.
 ④ CIVIL WAR. 12-1800. CONVEYED -
 ⑤ SPANISH AM. WAR. TO M. WALCOTT. 1830.
 ⑥ WORLD WAR.

SCALE: 1"=20' .32 ACRE

25-13-4



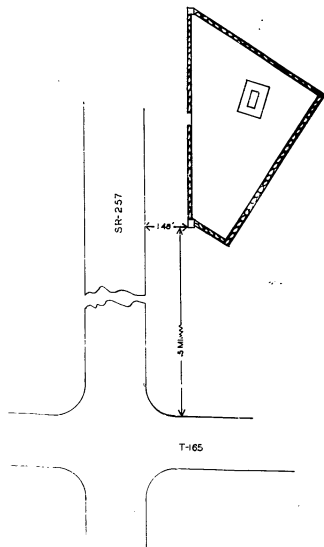
BICKETT-RICHARDS CEMETERY
 FRANKLIN CO. PERRY TWP.
 OFFICIAL PROJECT NOS.
 465-42-3-467 & 665-42-3-232

LEGEND HISTORY

① REVOLUTIONARY WAR. ESTABLISHED ABOUT -
 ② WAR OF 1812. 1836. GRANTED TO E.
 ③ WAR WITH MEXICO. BACKUS BY U.S. IN 1800.
 ④ CIVIL WAR. J. BICKETT ACQUIRE -
 ⑤ SPANISH AM. WAR. FROM F. JOHNSON 1831.
 ⑥ WORLD WAR.

SCALE: 1"=20' .78 ACRE

25-13-3



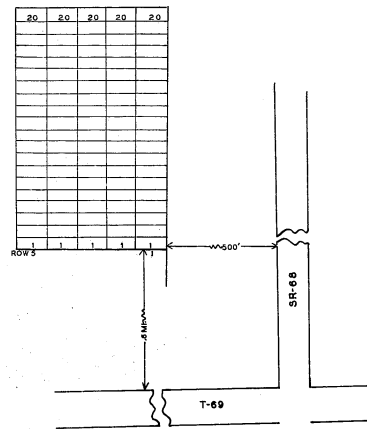
LEATHERLIPS CEMETERY
 FRANKLIN CO. PERRY TWP.
 OFFICIAL PROJECT NOS.
 465-42-3-467 & 665-42-3-232

LEGEND HISTORY

① REVOLUTIONARY WAR. ESTABLISHED SEPT. 14-
 ② WAR OF 1812. 1852. A PART OF THE
 ③ WAR WITH ME. U.S. MILITARY LAND
 ④ CIVIL WAR. PATENTED TO CHAS.
 ⑤ SPANISH AM. WAR. LODFLAND JAN-7-1825.
 ⑥ WORLD WAR.

SCALE: 1"=20' .09 ACRE

25-13-7



WILCOX CEMETERY
 FRANKLIN CO. PERRY TWP.
 OFFICIAL PROJECT NOS.
 465-42-3-467 & 665-42-3-232

LEGEND HISTORY

① REVOLUTIONARY WAR. ESTABLISHED 1824. A
 ② WAR OF 1812. PART OF THE U.S. MIL.
 ③ WAR WITH MEXICO. LAND PATENTED TO
 ④ CIVIL WAR. PHILEMAN THOMAS BY
 ⑤ SPANISH AM. WAR. U.S. PRESIDENT JOHN
 ⑥ WORLD WAR. ADAMS. M. RICH-13-1800.

SCALE: 1"=20' .09 ACRE

25-13-9