

NAME	R.	L.	G.	W.
MORGAN LOOMIS	10	2	4	19
RANNEBARGER A.M.	13	17	19	
WILCOX TRACY	12	1	5	10

LEGEND
 R-ROW L-LOT
 G-GRAVE W-WAR

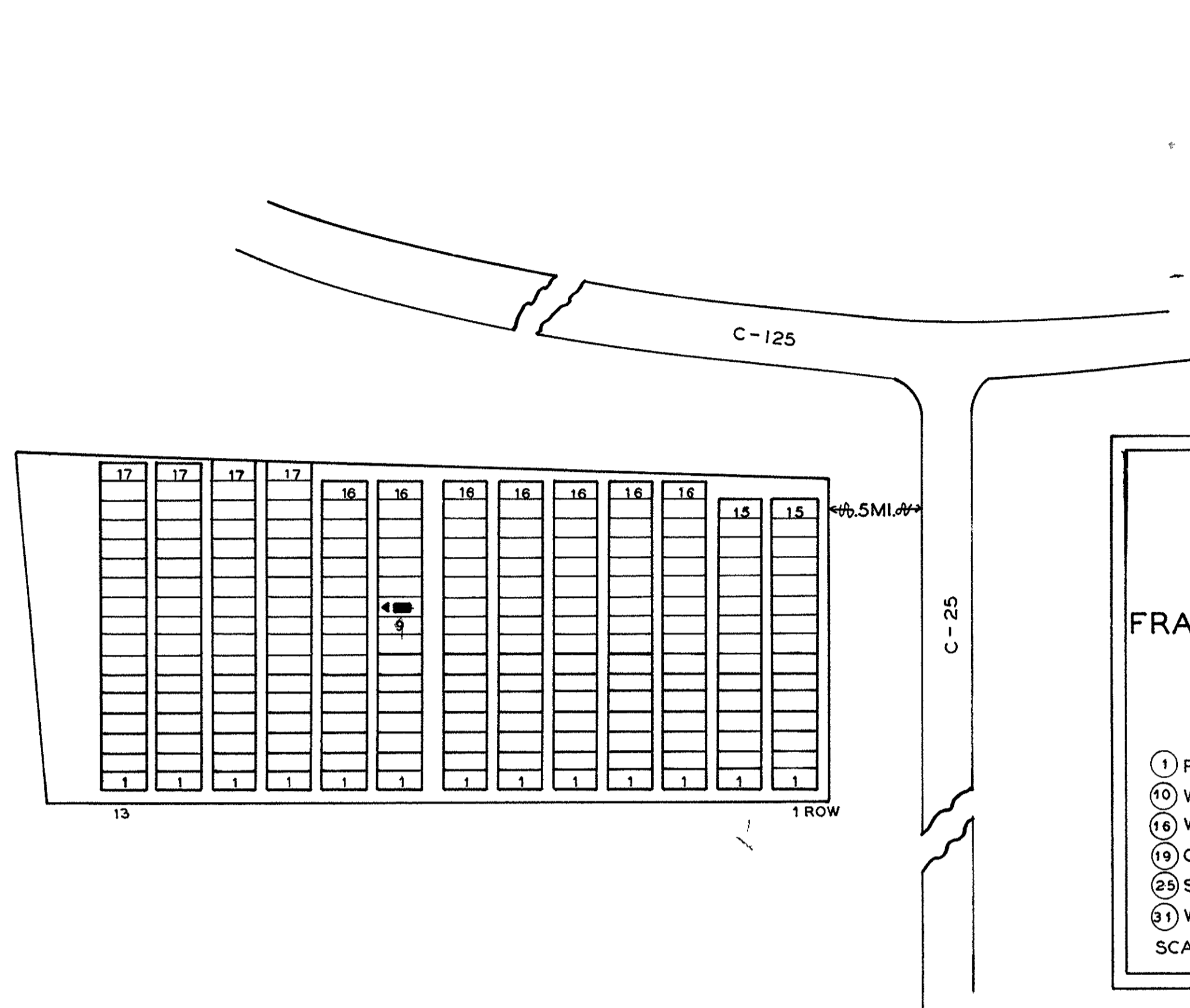
KEMPTON CEMETERY
 FRANKLIN CO. CLINTON TWP.

OFFICIAL PROJECT NOS 465-42-3-467 & 665-42-3-232

LEGEND	HISTORY
① REVOLUTIONARY WAR.	EST. DATE UNKNOWN
⑩ WAR OF 1812.	THE LAND WAS A -
⑪ WAR WITH MEXICO.	PART OF THE U.S.
⑰ CIVIL WAR.	MILITARY LAND PAT TO
⑳ SPANISH-AM. WAR.	JOHN RATHBONE -
㉓ WORLD WAR	JUNE, 23, 1800.

SCALE 1"=20' 36 ACRE

25-3-1



NAME	SEC	R.	G.	W.
HUDDLESON WM C	8	10	19	

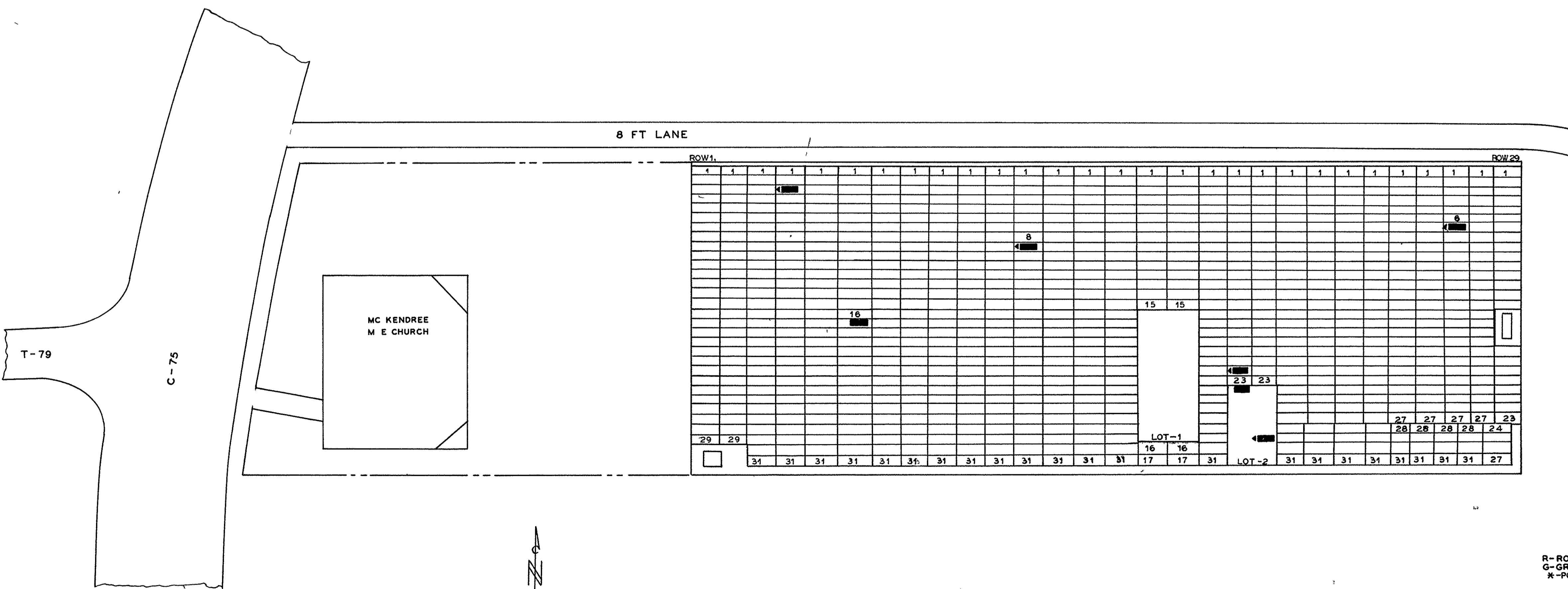
CLIME CEMETERY
 FRANKLIN CO. FRANKLIN TWP.

OFFICIAL PROJECT NOS.
 465-42-3-467 & 665-42-3-232

LEGEND	HISTORY
① REVOLUTIONARY WAR.	THIS LAND CAME TO
⑩ WAR OF 1812	THE CLIME FAMILY-
⑪ WAR WITH MEXICO.	APRIL 1840. DATE OF
⑰ CIVIL WAR.	ESTABLISHMENT UN-
⑳ SPANISH AM. WAR	- KNOWN.
㉓ WORLD WAR.	

SCALE 1"=20' .23 ACRE.

25-4-9



NAME	R.	L.	G.	W.
DECKER JOHN G.	12	9	19	
GREEN D.J.	4	3	19	
HARTER GEORGE	19	2	1	19
HARTER HIRAM	20	2	6	19
LEWIS EPHRAIM	27	7	19	
MOCK JOSEPH	19	22	19	
MORGAN RICHARD	6	17	19	

MC. KENDREE M. E. CHURCH CEMETERY
 FRANKLIN CO. CLINTON TWP.

OFFICIAL PROJECT NOS. 465-42-3-467 & 665-42-3-232

LEGEND	HISTORY
① REVOLUTIONARY WAR	EST. 1850. THIS LAND
⑩ WAR OF 1812.	BEING A PART OF -
⑪ WAR WITH MEXICO.	THE U.S. LAND GRANT
⑰ CIVIL WAR.	TO JOHN RATHBONE
⑳ SPANISH AM. WAR.	
㉓ WORLD WAR.	

SCALE 1"=20' .89 ACRE

25-3-6